



SNS COLLEGE OF ENGINEERING
Kurumbapalayam (Po), Coimbatore – 641 107
Accredited by NAAC-UGC with 'A' Grade
Approved by AICTE & Affiliated to Anna University, Chennai



WORKBOOK

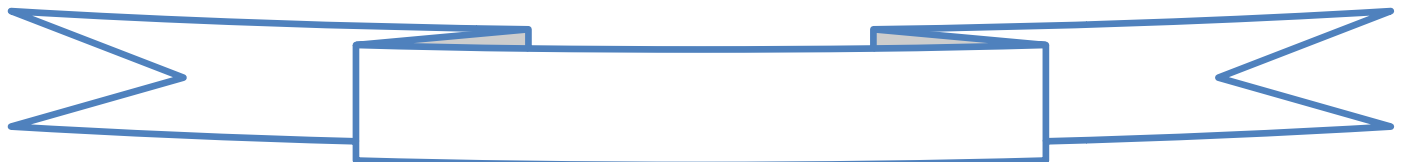
UNIT II

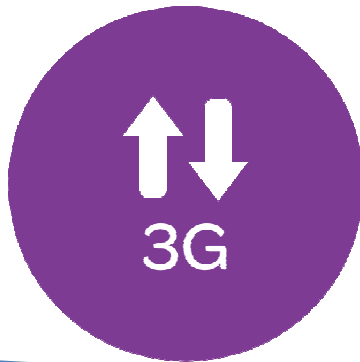
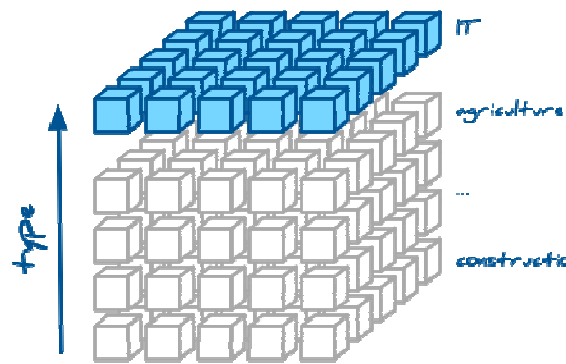
TOPIC 1: REPORTING AND QUERY TOOLS AND ITS APPLICATIONS

1. Find the categories of Reporting tools defined in the picture.



and





2. Fill the blanks correctly.

_____ allows to generate regular operational reports.

_____ inexpensive desktop tools designed for End users.

3. Choose the best answer.

- **Managed Query tool shields end users from the complexities of SQL and Data base structures by inserting a _____ between Users and the Data base.**

(a) Metadata layer

(b) Meta layer

(c) Data Layer

(d) Access Layer

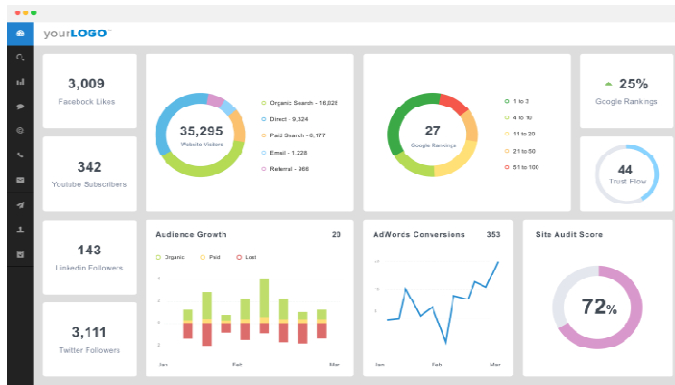
TOPIC 2: TOOL CATEGORIES

1. _____ is a type of management information system intended to facilitate and support the information and decision making needs of senior executives by providing easy access to both internal and external information to meet strategic goals of organization.



2. Mention the categories of Data Mining Tools.





3. Expand the following.

- **MDA**
- **OLAP**
- **BPM**
- **EIS**

TOPIC 3: THE NEED FOR APPLICATIONS

1. Mention the advantages of Managed Query and EIS

2. List the disadvantage of Managed Query and EIS



3. Fill the various forms of data access form data warehouse.

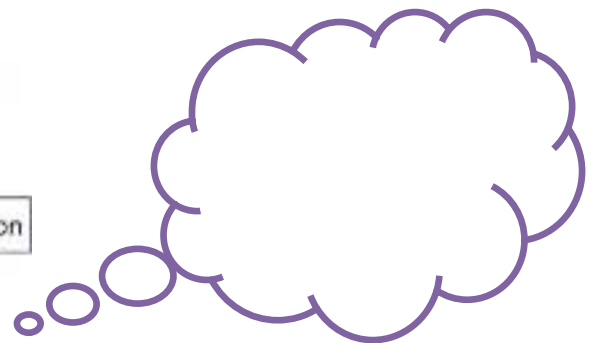
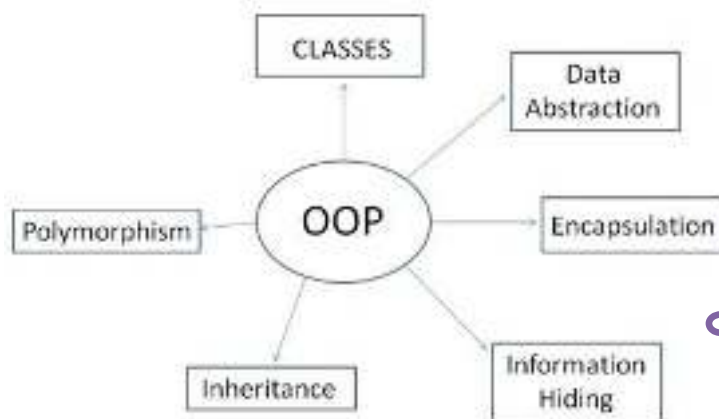
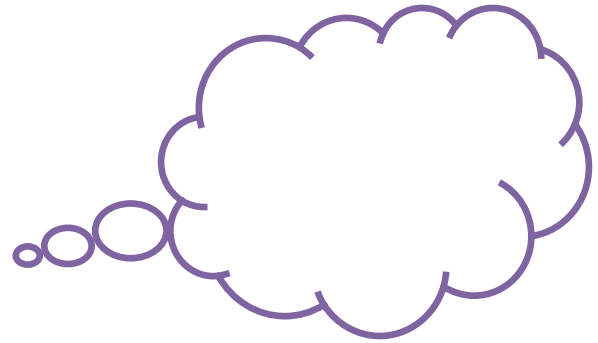
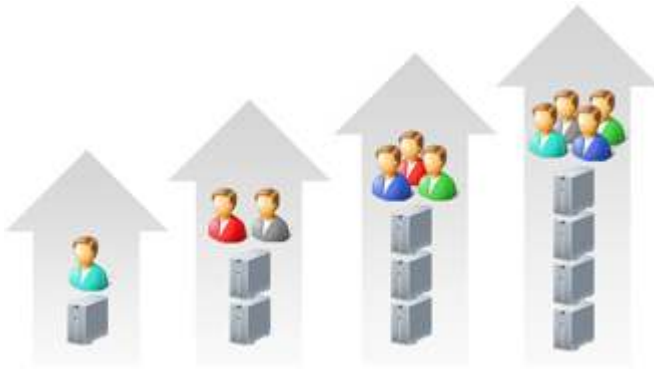
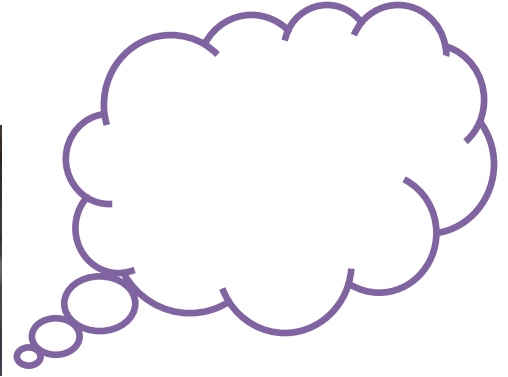


- Simple _____ form reporting
- Ad hoc _____ queries
- Predefined repeatable _____
- Complex _____ with multitable joins, multilevel subqueries
- _____ analysis
- _____ series analysis
- Data visualization, graphing, charting



TOPIC 4: COGNOS IMPROMPTU

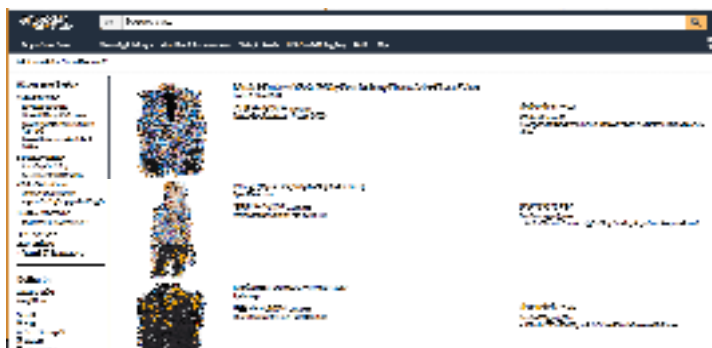
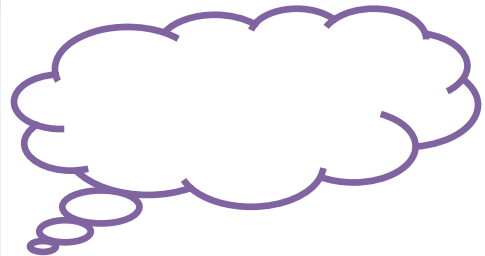
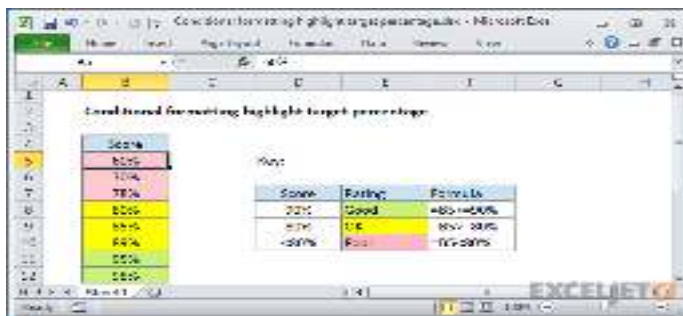
1. Mention the features of Cognos Impromptu



2. Choose the best option.

- (i) Cognos Impromptu reporting begins with
 - (a) Information Catalog
 - (b) Data Catalog
 - (c) Headstarts
 - (d) templates
- (ii) Is templates are database-independent.
 - (a) True
 - (b) False
- (iii) Variety of page and screen formats will be under
 - (a) Headstarts
 - (b) Templates

3. List the types of Exception reporting in Cognos Impromptu



TOPIC 5: OLAP-NEEDS AND MULTIDIMENSIONAL DATA MODEL

1. To solve business problems nowadays, two-dimensional data models is enough not. If, not, which data model is needed. Draw the necessary diagram.



2. Two-dimensional relational model involves table scan, multiple joins, aggregations, sorting. In-order to compute those, this requires _____ computing resources.

- (a) More
- (b) Less
- (c) No change



3. Two-dimensional data model has two drawbacks. List it.



TOPIC 6: OLAP GUIDELINES

1. Few guidelines are mentioned as picture. Find it out

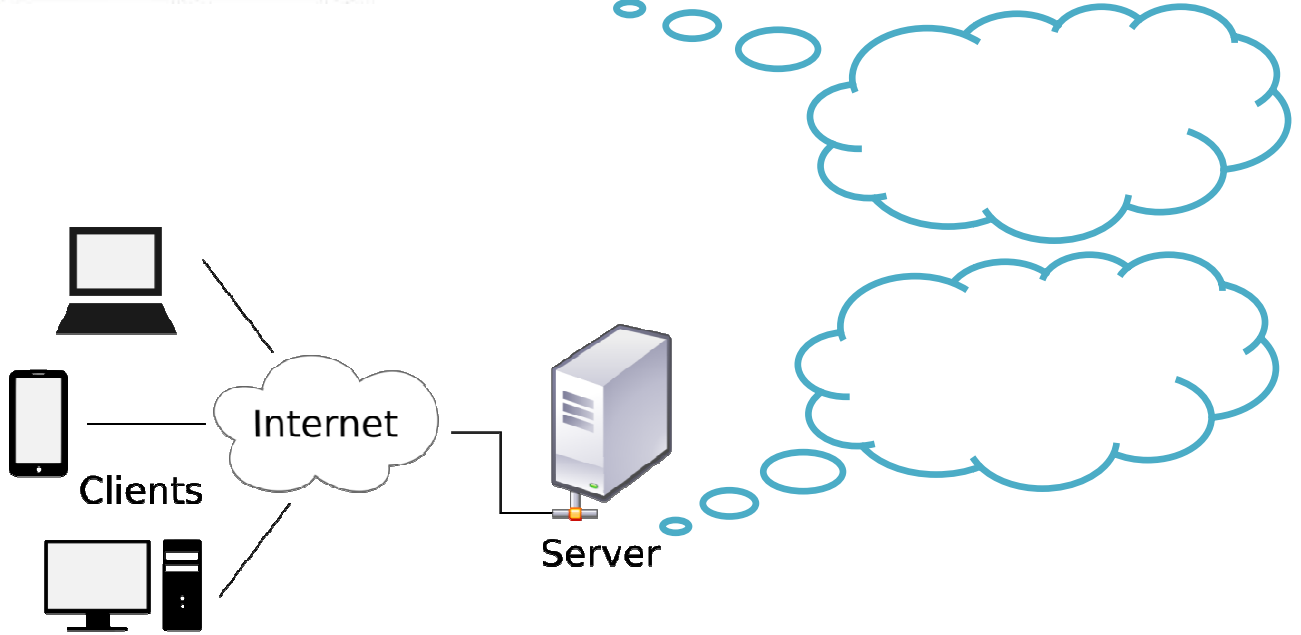


conceptual



Love
u,
sis' 





2. Assemble the scraped words to find one of the guidelines of OLAP.

G	R	E	I	C	E	N
---	---	---	---	---	---	---

D	M	I	S	O	T	Y	L	I	E	N	A	N	I
---	---	---	---	---	---	---	---	---	---	---	---	---	---

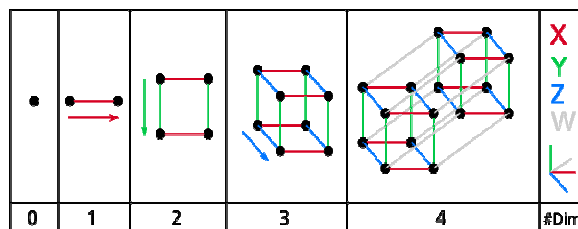
3. Write any 3 guidelines that are not mentioned in the question 1 & 2.

TOPIC 7: MULTIDIMENSIONAL VERSUS MULTI-RELATIONAL OLAP

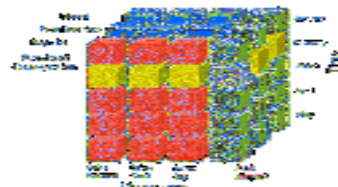
1. To reduce the size of database, the three things to be noted are,



2. Find the question and then answer.

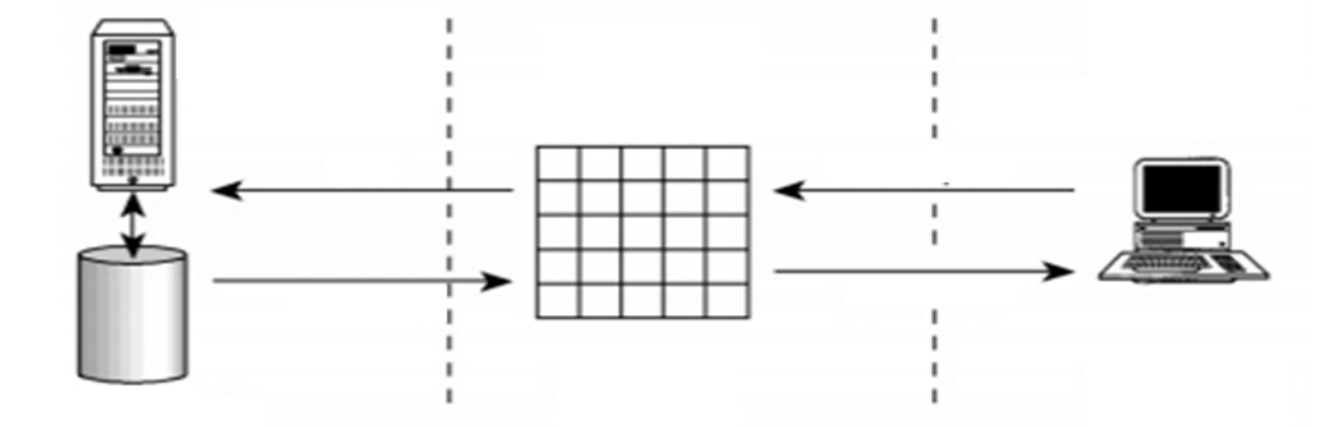


THEN



TOPIC 8: CATEGORIES OF OLAP TOOLS

1. Complete the diagram to get the ROLAP architecture.



2. Convert and draw the above ROLAP architecture into MOLAP architecture.

3. Write the difference between ROLAP and MOLAP

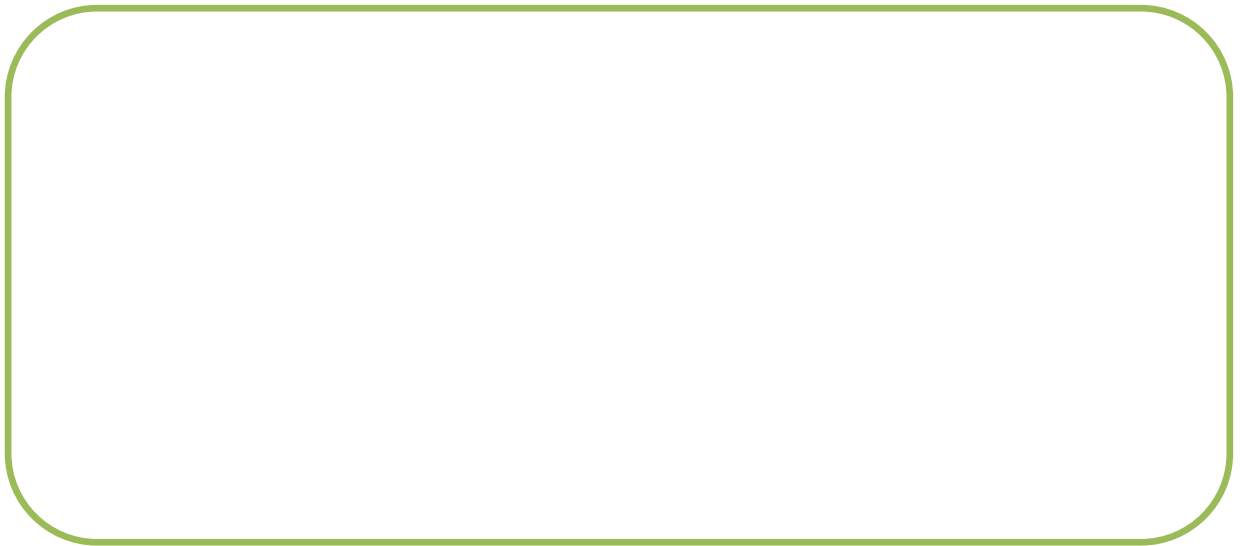
S.NO	ROLAP	MOLAP

TOPIC 9: OLAP TOOLS AND THE INTERNET

1. Fill in the blanks.

- (i) _____ is virtually free resource which provides universal connectivity within and between countries.
- (ii) _____ allows companies to store and manage both data and applications on servers that can be centrally managed, maintained and updated

2. Draw the architecture of Web processing model.



3. Mention the OLAP tools in collaborating with internet.