



# SNS COLLEGE OF ENGINEERING

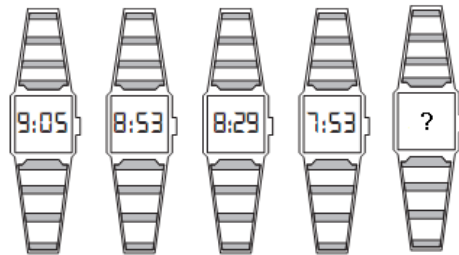


AN AUTONOMOUS INSTITUTION  
Academic Year 2023 – 2024(Even semester)

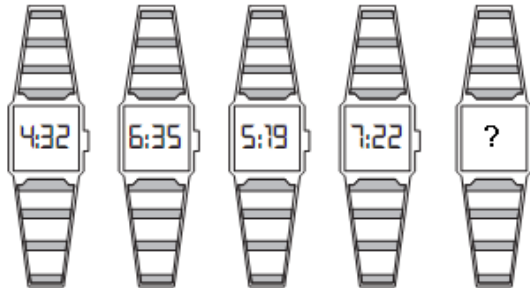
## PUZZLES

1. What time should last watch show?

ANS: 7.05



2. What time should last watch show?



ANS: 6.06

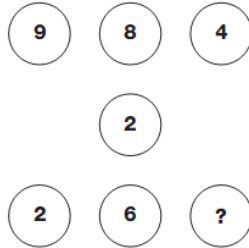
3. Which number replaces the question mark?



ANS: 39

4. Which number replaces the question mark?

ANS: 7



5. Choose the alternative which is closely resembles the mirror image of the given combination.

BRISK

(1) KSIJB

(2) K2IRB

(3) K2IRB

(4) K2IRB

ANS :

4

6. Choose the alternative which is closely resembles the mirror image of the given combination.

MALAYALAM

(1) MALAYALAM

(2) MAJAYAJAM

(3) MALAYALAM

(4) MAJAYAJAM

ANS: 2

7. Identify the figure that completes the pattern



ANS: 3

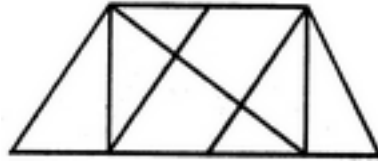
8. Identify the figure that completes the pattern



ANS: 2

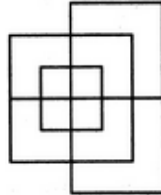
9. Find the number of triangles in the given figure.

ANS: 14



10. Find the minimum number of straight lines required to make the given figure.

ANS: 13



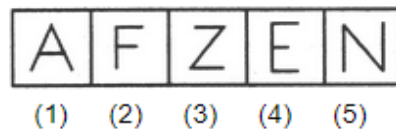
11. Choose the figure which is different from the rest.

ANS : 1



12. Choose the figure which is different from the rest.

ANS: 4



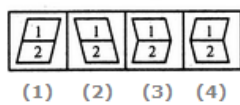
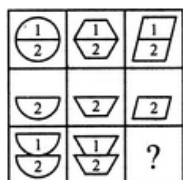
13. Find out the unmatched. ZOA, YPB, XQC, WDR.

Ans: WDR

14. Find out the unmatched AZL, CYN, EPV, FTR

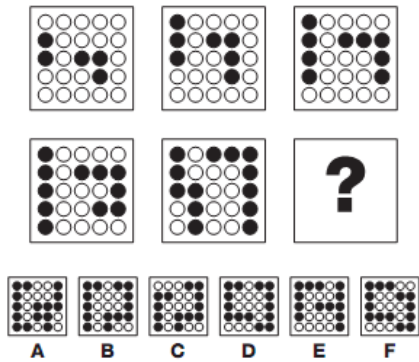
Ans: EPV

15. Select a suitable figure from the four alternatives that would complete the figure



Ans: 3

16. Which grid replaces the question mark?



Ans: A

17. 19, 26, 33, 46, 59, 74, 91 find the odd man out?

ANS: 33

18. 1, 3, 10, 21, 64, 129, 356, 777

ANS: 356

19. 6, 12, 48, 100, 384, 768, 3072

ANS: 100

20. 40960, 10240, 2560, 640, 200, 40, 10

ANS: 200