



SNS COLLEGE OF ENGINEERING

Kurumbapalayam (Po), Coimbatore – 641 107

An Autonomous Institution

Accredited by NBA – AICTE and Accredited by NAAC – UGC with ‘A’ Grade
Approved by AICTE, New Delhi & Affiliated to Anna University, Chennai

DEPARTMENT OF ELECTRONICS AND COMMUNICATION ENGINEERING

COURSE NAME : 19EC602 – Microwave and Optical engineering

III YEAR / VI SEMESTER

Unit I- MICROWAVE ACTIVE DEVICES

Topic : Reflex Klystron – Modes and efficiency considerations

**Reflex Klystron – Modes and efficiency considerations / 19EC602/ Microwave and Optical Engineering /Mrs.D.Vishnu
Priya /ECE/SNSCE**



Conventional Tubes



Conventional Device tubes cannot be used for frequencies above **100MHz**

1. Interelectrode capacitance
2. Lead Inductance effect
3. Transit time effect
4. Gain Bandwidth limitation
5. Effect of RF losses (Conductance, dielectric)
6. Effect due to radiation losses

- Efficient Microwave tubes usually operate on the theory of electron **velocity modulation** concept
- The electron **transit time** is used in the conversion of dc power to RF power

Linear Beam O tubes

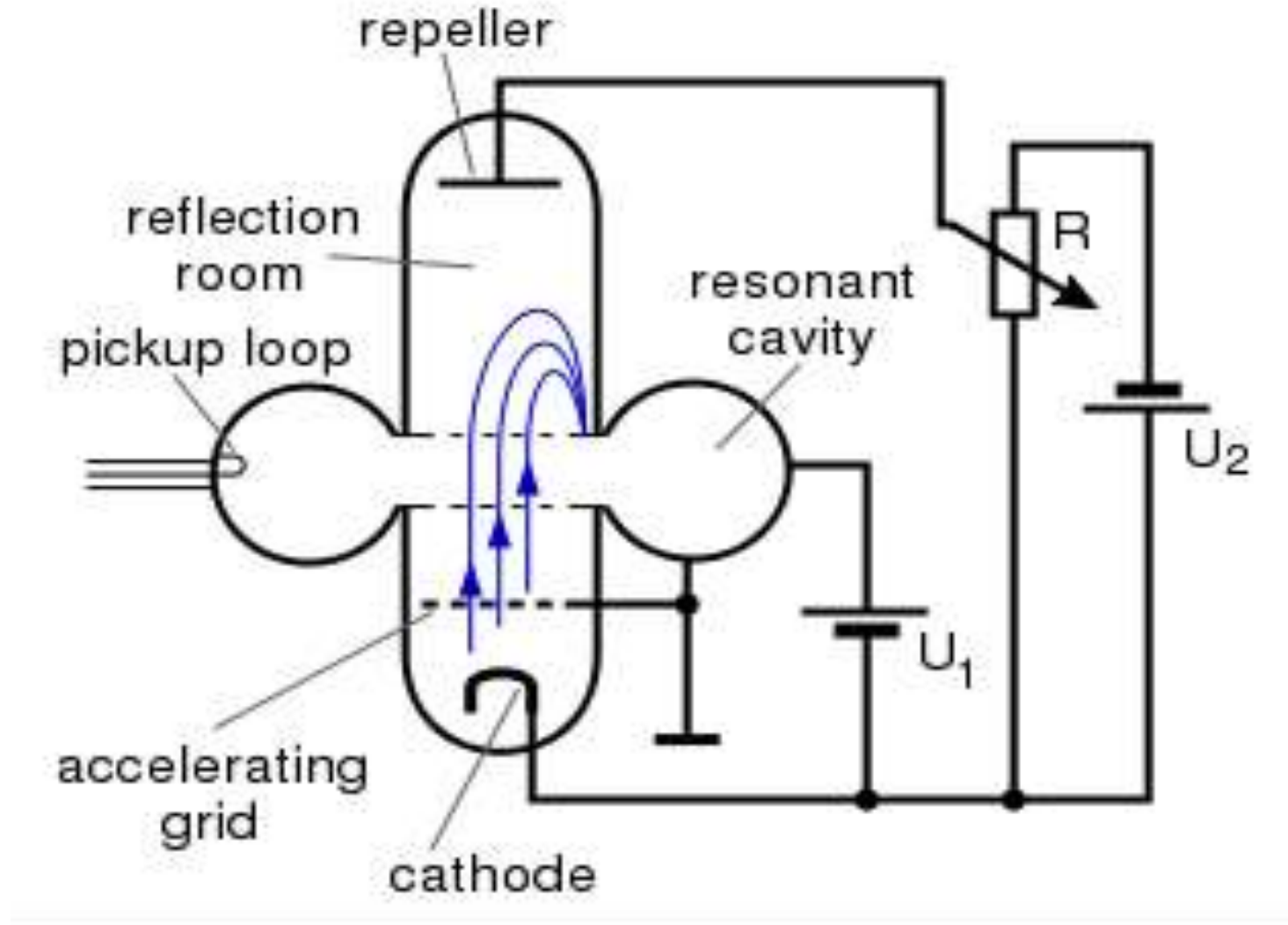
- The paramount O – type tube is the two cavity klystron followed by the reflex klystron.
- Slow wave structures are also O-type but have non-resonant periodic structures for electron interactions.
- Twystron is a hybrid amplifier which uses a combination of klystron and Slow wave structures.

KLYSTRON

There are two basic configurations of klystron tubes

1. **Reflex Klystron** used as a low-power Microwave oscillator
2. **Multi cavity klystron** used as low-power microwave amplifier







REFLEX KLYSTRON

- **Single Re-entrant cavity** as a resonator.
- The electron beam **emitted** from the cathode is **accelerated** by the grid and passes through the cavity anode to the repeller space between the cavity anode and the repeller electrode .
- The **feedback** required to maintain the oscillations within the cavity is obtained by **reversing electron beam** emitted from the cathode towards repeller electrode and sending it back through the cavity.
- The electrons in the beam are **velocity modulated before the beam passes through the cavity** the second time and give up the energy to the cavity to maintain oscillations.
- This type of a Klystron is called a **Reflex Klystron** because of the reflex action of the electron beam.

REENTRANT CAVITY

- Therefore the reentrant cavities are designed for use in klystron and microwave triodes
- A reentrant cavity is one in which the **metallic boundaries extend into the interior** of the cavity
 - Inductance decreased
 - Reduced resistance losses
 - Prevents radiation losses

Mechanism of Oscillation

- It is assumed that the **oscillations are set up in the tube initially** due to noise or switching transients and the oscillations are sustained by device operation.
- The **electrons** passing through the cavity gap (d) **experience this RF field** and are **velocity modulated**.



Applegate diagram

- The electrons B which encountered the positive half cycle of the RF field in the cavity gap d will be accelerated, A which encountered zero RF field will pass with unchanged original velocity, and c which encountered the negative half cycle will be retarded on entering the repeller space.
- All these velocity modulated electrons will be repelled back to the cavity by the repeller due to the negative potential.
- The repeller distance L and the voltages can be adjusted to receive all the electrons at a same time on the positive peak of the cavity RF velocity cycle.
- Thus the velocity modulated electrons are bunched together and **lose their kinetic energy when they encounter the positive cycle of the cavity RF field.**
- Bunches occur once per cycle centered around the reference electron and these **bunches transfer maximum energy to the gap** to get sustained oscillations.
- For oscillations to be sustained, the time taken by the electrons to travel into the repeller space and back to the gap (**transit time**) must have an **optimum value**.



- The electrons should return after $1\frac{3}{4}$, $2\frac{3}{4}$ or $3\frac{3}{4}$ cycles – most optimum departure time.
- If **T is the time period at the resonant frequency**, t_o is the time taken by the reference electron to travel in the repeller space between entering the repeller space and returning to the cavity at positive peak voltage on formation of the bunch

Then, $t_o = (n + \frac{3}{4})T = NT$

Where $N = n + \frac{3}{4}$, $n = 0, 1, 2, 3, \dots$

N – mode of oscillation.

- The mode of oscillation is named as $N = \frac{3}{4}, 1\frac{3}{4}, 2\frac{3}{4}$ etc for modes $n = 0, 1, 2, \dots$ resp.



Any Query????

Thank you.....